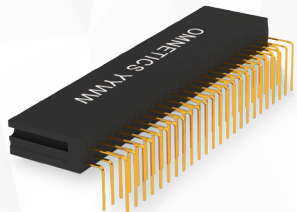


Dual Row Offset Micro Strip

SHORT/LONG ALT. THRU HOLE TAIL (TYPE H2) ORDERING GUIDE

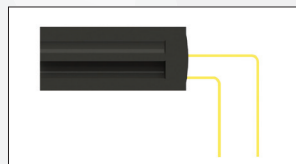
SERIES	# OF CONTACTS	TERMINATION TYPE	COMMON OPTIONS
--------	---------------	------------------	----------------

PSM
PIN CONNECTOR

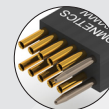


02 - 97

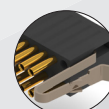
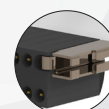
H2



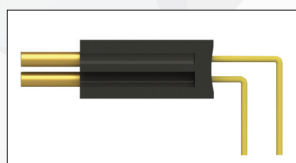
G GUIDE POST/HOLE
GS MULTIPLE GUIDE POSTS/
HOLES



LE LATCH (END MOUNT)
LES MULTIPLE LATCHES
(END MOUNT)



SSO
SOCKET CONNECTOR



LT LATCH (TOP MOUNT)
LTS MULTIPLE LATCHES (TOP
MOUNT)

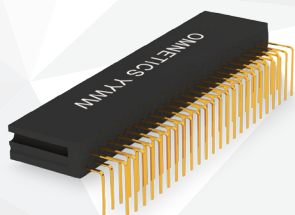


M MOUNTING HOLE

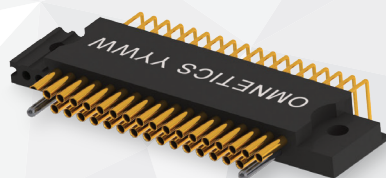


HT HIGH TEMP

EXAMPLES:



PSM-45-H2



SSO-35-H2-M-GS

RoHS RoHS COMPLIANT

