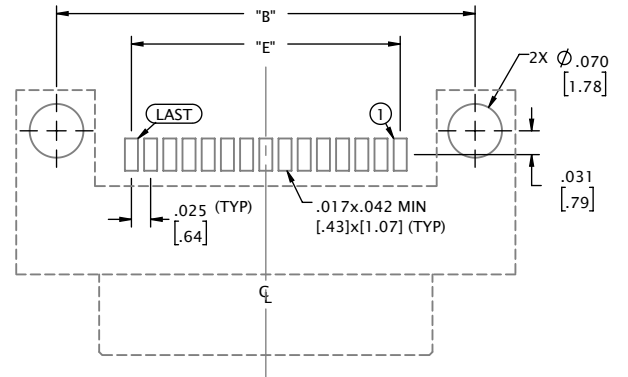
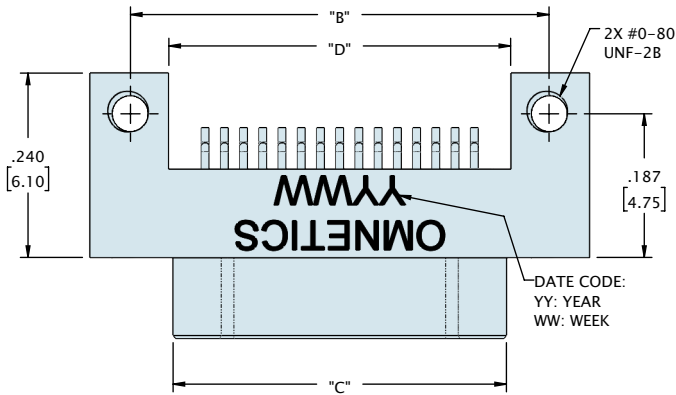
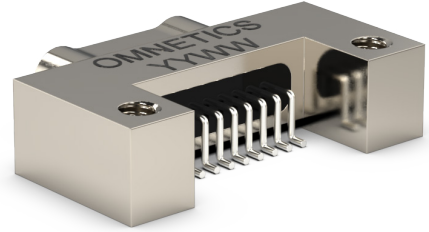
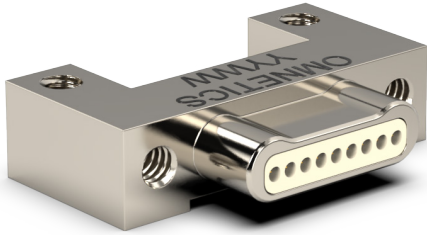
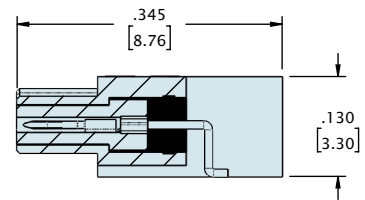
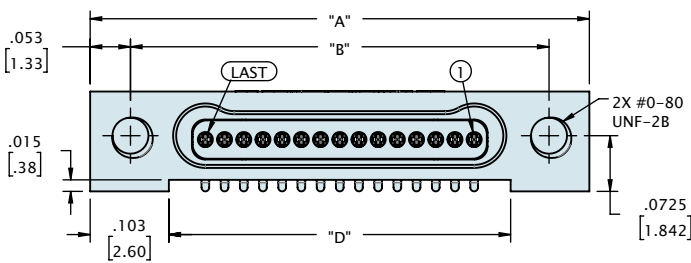


# SINGLE ROW HORIZONTAL SMT (TYPE AA)



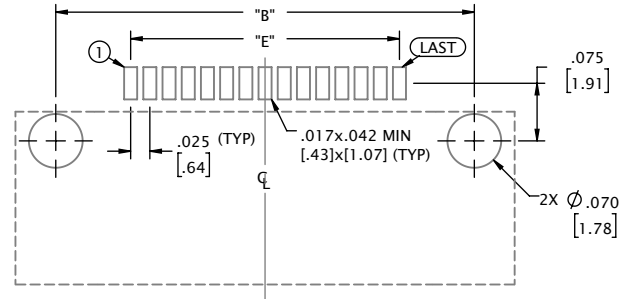
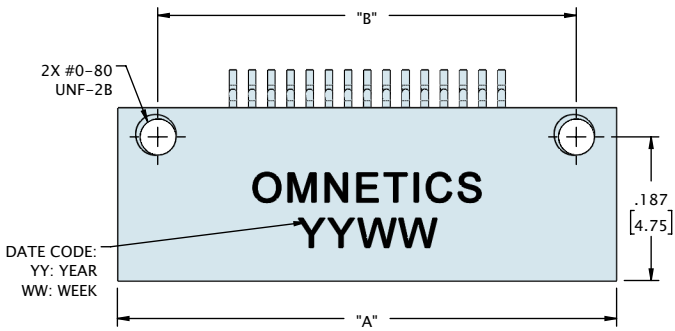
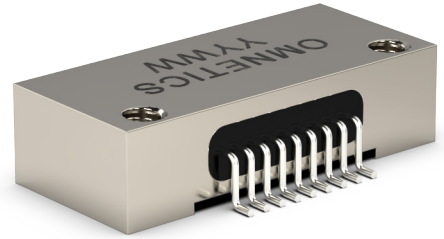
**SUGGESTED PAD LAYOUT  
(VIEW FROM MOUNTING SIDE OF BOARD)**



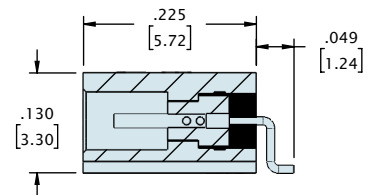
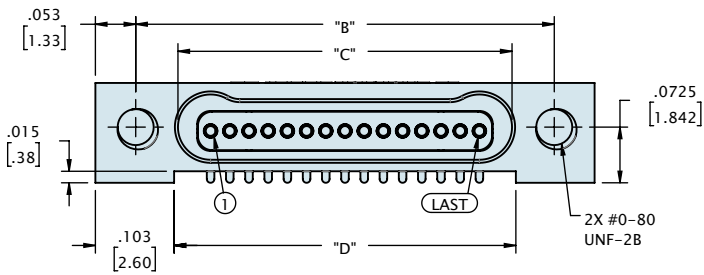
| CONTACTS | "A"           | "B"           | "C"           | "D"           | "E"           |
|----------|---------------|---------------|---------------|---------------|---------------|
| 05       | .400 [10.16]  | .295 [7.49]   | .184 [4.67]   | .195 [4.95]   | .100 [2.54]   |
| 09       | .500 [12.70]  | .395 [10.03]  | .284 [7.21]   | .295 [7.49]   | .200 [5.08]   |
| 15       | .650 [16.51]  | .545 [13.84]  | .434 [11.02]  | .445 [11.30]  | .350 [8.89]   |
| 21       | .800 [20.32]  | .695 [17.65]  | .584 [14.83]  | .595 [15.11]  | .500 [12.70]  |
| 25       | .900 [22.86]  | .795 [20.19]  | .684 [17.37]  | .695 [17.65]  | .600 [15.24]  |
| 31       | 1.050 [26.67] | .945 [24.00]  | .834 [21.18]  | .845 [21.46]  | .750 [19.05]  |
| 37       | 1.200 [30.48] | 1.095 [27.81] | .984 [24.99]  | .995 [25.27]  | .900 [22.86]  |
| 51       | 1.550 [39.37] | 1.445 [36.70] | 1.334 [33.88] | 1.345 [34.16] | 1.250 [31.75] |

DIMENSIONS IN [ ] ARE IN MILLIMETERS AND ARE FOR REFERENCE ONLY

# SINGLE ROW HORIZONTAL SMT (TYPE AA)



**SUGGESTED PAD LAYOUT**  
(VIEW FROM MOUNTING SIDE OF BOARD)



| CONTACTS | "A"           | "B"           | "C"           | "D"           | "E"           |
|----------|---------------|---------------|---------------|---------------|---------------|
| 05       | .400 [10.16]  | .295 [7.49]   | .185 [4.70]   | .195 [4.95]   | .100 [2.54]   |
| 09       | .500 [12.70]  | .395 [10.03]  | .285 [7.24]   | .295 [7.49]   | .200 [5.08]   |
| 15       | .650 [16.51]  | .545 [13.84]  | .435 [11.05]  | .445 [11.30]  | .350 [8.89]   |
| 21       | .800 [20.32]  | .695 [17.65]  | .585 [14.86]  | .595 [15.11]  | .500 [12.70]  |
| 25       | .900 [22.86]  | .795 [20.19]  | .685 [17.40]  | .695 [17.65]  | .600 [15.24]  |
| 31       | 1.050 [26.67] | .945 [24.00]  | .835 [21.21]  | .845 [21.46]  | .750 [19.05]  |
| 37       | 1.200 [30.48] | 1.095 [27.81] | .985 [25.02]  | .995 [25.27]  | .900 [22.86]  |
| 51       | 1.550 [39.37] | 1.445 [36.70] | 1.335 [33.91] | 1.345 [34.16] | 1.250 [31.75] |

DIMENSIONS IN [ ] ARE IN MILLIMETERS AND ARE FOR REFERENCE ONLY