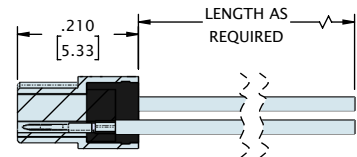
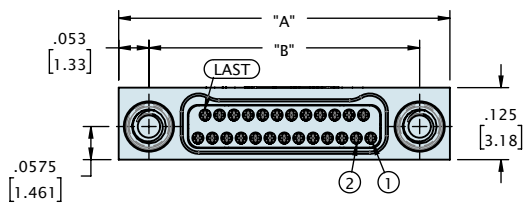
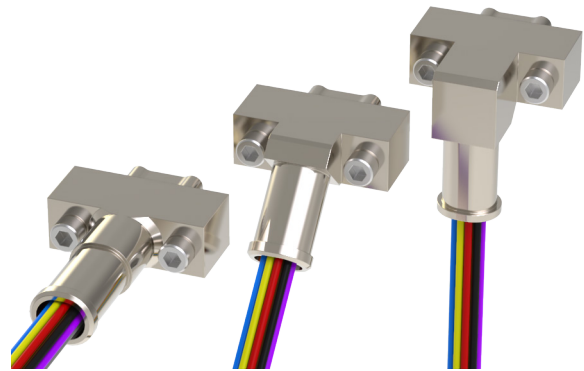
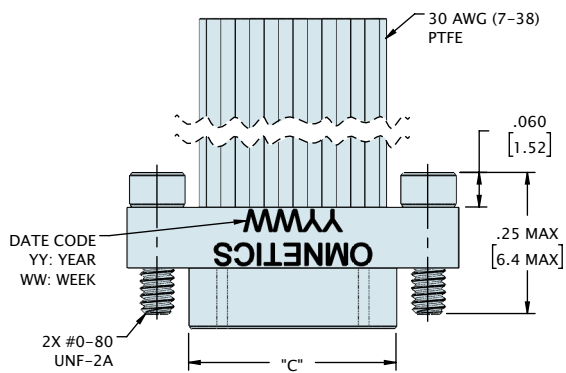
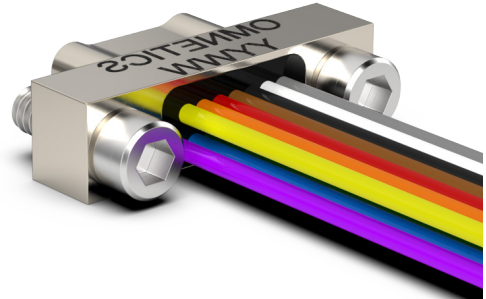
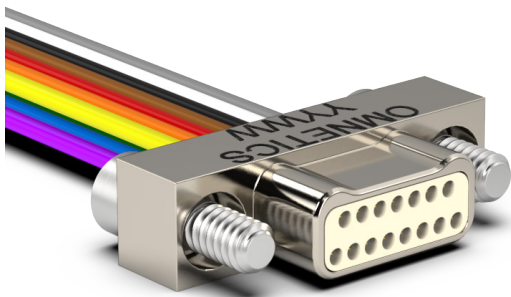


DUAL ROW PRE-WIRED (TYPE WD)

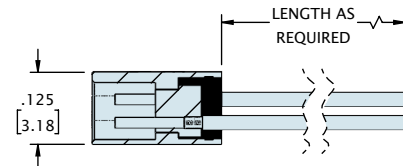
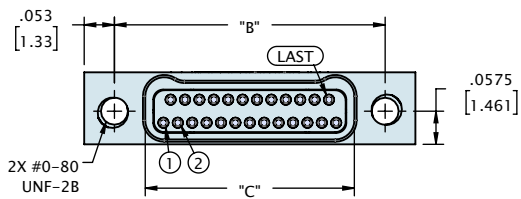
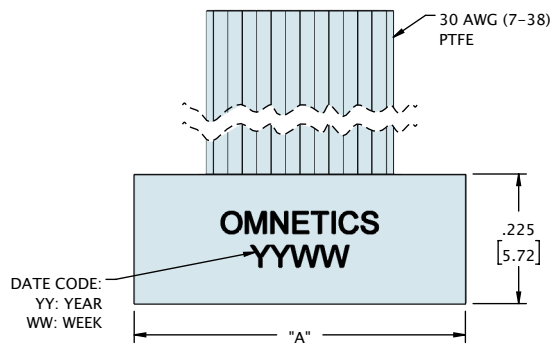
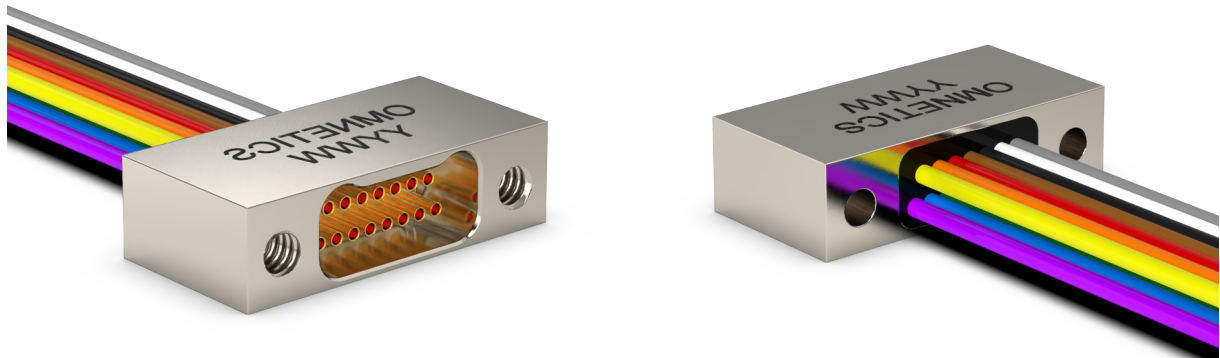


JACKSCREW HIDDEN FOR CLARITY

CONTACTS	"A"	"B"	"C"
09	.375 [9.53]	.270 [6.86]	.160 [4.06]
15	.450 [11.43]	.345 [8.76]	.235 [5.97]
21	.525 [13.34]	.420 [10.67]	.310 [7.87]
25	.575 [14.61]	.470 [11.94]	.360 [9.14]
31	.650 [16.51]	.545 [13.84]	.435 [11.05]
37	.725 [18.42]	.620 [15.75]	.510 [12.95]
51	.900 [22.86]	.795 [20.19]	.685 [17.40]
65	1.075 [27.31]	.970 [24.64]	.860 [21.84]
69	1.125 [28.58]	1.020 [25.91]	.910 [23.11]
85	1.325 [33.66]	1.220 [30.99]	1.110 [28.19]
91	1.452 [36.88]	1.321 [33.55]	1.185 [30.10]

DIMENSIONS IN [] ARE IN MILLIMETERS AND ARE FOR REFERENCE ONLY

DUAL ROW PRE-WIRED (TYPE WD)



CONTACTS	"A"	"B"	"C"
09	.375 [9.53]	.270 [6.86]	.163 [4.14]
15	.450 [11.43]	.345 [8.75]	.238 [6.05]
21	.525 [13.34]	.420 [10.67]	.313 [7.95]
25	.575 [14.61]	.470 [11.94]	.363 [9.22]
31	.650 [16.51]	.545 [13.84]	.438 [11.13]
37	.725 [18.42]	.620 [15.75]	.513 [13.03]
51	.900 [22.86]	.795 [20.19]	.688 [17.48]
65	1.075 [27.31]	.970 [24.64]	.863 [21.92]
69	1.125 [28.58]	1.020 [25.91]	.913 [23.19]
85	1.325 [33.66]	1.220 [30.99]	1.113 [28.27]
91	1.452 [36.88]	1.321 [33.55]	1.188 [30.18]

DIMENSIONS IN [] ARE IN MILLIMETERS AND ARE FOR REFERENCE ONLY