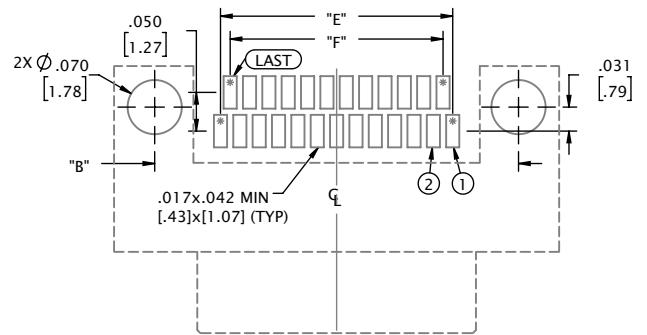
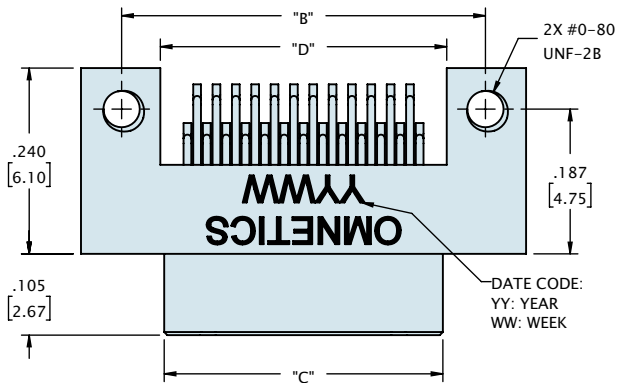
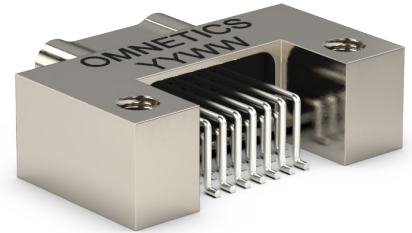
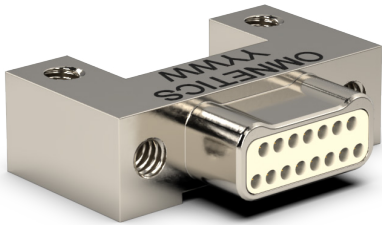
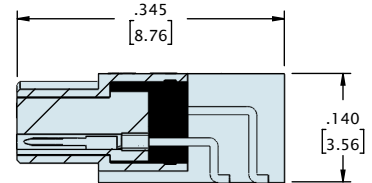
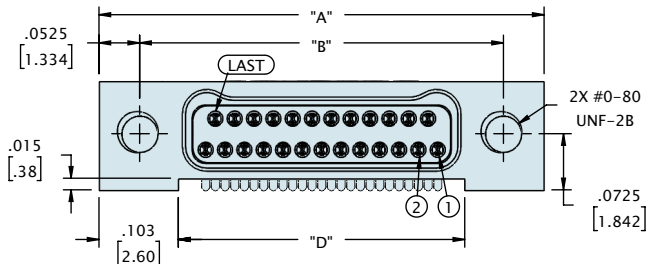


DUAL ROW HORIZONTAL SMT (TYPE AA)



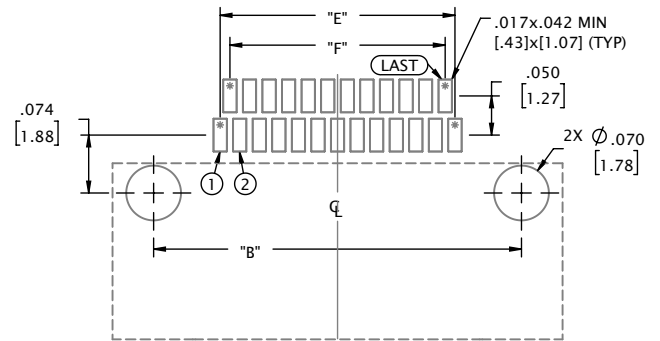
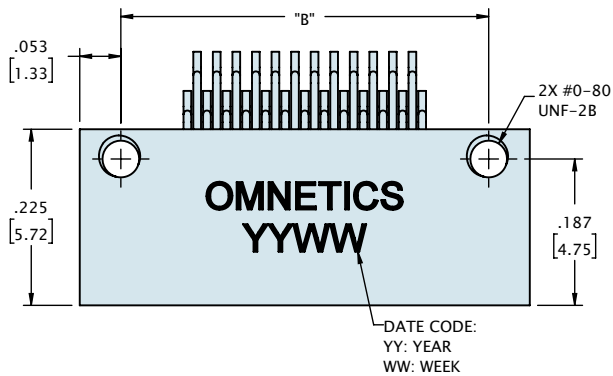
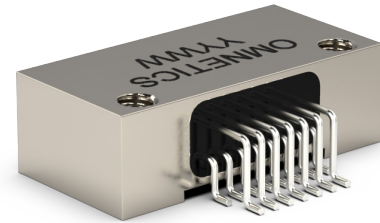
SUGGESTED PAD LAYOUT
(VIEW FROM MOUNTING SIDE OF BOARD)



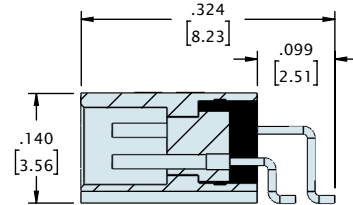
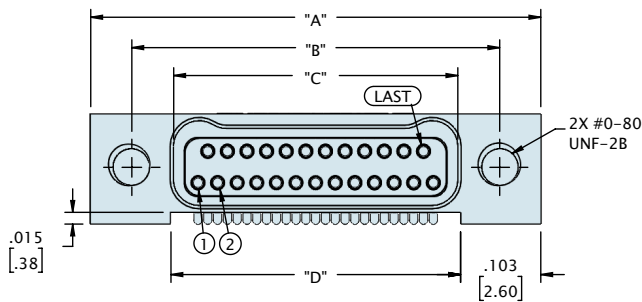
CONTACTS	"A"	"B"	"C"	"D"	"E"	"F"
09	.375 [9.53]	.270 [6.86]	.160 [4.06]	.170 [4.32]	.100 [2.54]	.075 [1.90]
15	.450 [11.43]	.345 [8.76]	.235 [5.97]	.245 [6.22]	.175 [4.44]	.150 [3.81]
21	.525 [13.34]	.420 [10.67]	.310 [7.87]	.320 [8.13]	.250 [6.35]	.225 [5.71]
25	.575 [14.61]	.470 [11.94]	.360 [9.14]	.370 [9.40]	.300 [7.62]	.275 [6.98]
31	.650 [16.51]	.545 [13.84]	.435 [11.05]	.445 [11.30]	.375 [9.52]	.350 [8.89]
37	.725 [18.42]	.620 [15.75]	.510 [12.95]	.520 [13.21]	.450 [11.43]	.425 [10.79]
51	.900 [22.86]	.795 [20.19]	.685 [17.40]	.695 [17.65]	.625 [15.87]	.600 [15.24]
65	1.075 [27.31]	.970 [24.64]	.860 [21.84]	.870 [22.10]	.800 [20.32]	.775 [19.68]
69	1.125 [28.58]	1.020 [25.91]	.910 [23.11]	.920 [23.37]	.850 [21.59]	.825 [20.95]
85	1.325 [33.66]	1.220 [30.99]	1.110 [28.19]	1.120 [28.45]	1.050 [26.67]	1.025 [26.03]
91	1.452 [36.88]	1.321 [33.55]	1.185 [30.10]	1.195 [30.35]	1.125 [28.57]	1.100 [27.94]

DIMENSIONS IN [] ARE IN MILLIMETERS AND ARE FOR REFERENCE ONLY

DUAL ROW HORIZONTAL SMT (TYPE AA)



SUGGESTED PAD LAYOUT
(VIEW FROM MOUNTING SIDE OF BOARD)



CONTACTS	"A"	"B"	"C"	"D"	"E"	"F"
09	.375 [9.53]	.270 [6.86]	.163 [4.14]	.170 [4.32]	.100 [2.54]	.075 [1.91]
15	.450 [11.43]	.345 [8.76]	.238 [6.05]	.245 [6.22]	.175 [4.45]	.150 [3.81]
21	.525 [13.34]	.420 [10.67]	.313 [7.95]	.320 [8.13]	.250 [6.35]	.225 [5.72]
25	.575 [14.61]	.470 [11.94]	.363 [9.22]	.370 [9.40]	.300 [7.62]	.275 [6.99]
31	.650 [16.51]	.545 [13.84]	.438 [11.13]	.445 [11.30]	.375 [9.53]	.350 [8.89]
37	.725 [18.42]	.620 [15.75]	.513 [13.03]	.520 [13.21]	.450 [11.43]	.425 [10.80]
51	.900 [22.86]	.795 [20.19]	.688 [17.48]	.695 [17.65]	.625 [15.88]	.600 [15.24]
65	1.075 [27.31]	.970 [24.64]	.863 [21.92]	.870 [22.10]	.175 [4.45]	.150 [3.81]
69	1.125 [28.58]	1.020 [25.91]	.913 [23.19]	.920 [23.37]	.850 [21.59]	.825 [20.96]
85	1.325 [33.66]	1.220 [30.99]	1.113 [28.27]	1.120 [28.45]	1.050 [26.67]	1.025 [26.04]
91	1.452 [36.88]	1.321 [33.55]	1.188 [30.18]	1.195 [30.35]	1.125 [28.58]	1.100 [27.94]

DIMENSIONS IN [] ARE IN MILLIMETERS AND ARE FOR REFERENCE ONLY