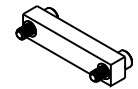


PART NO.	A42031-031	REV	ECO	DATE	APP
		B	104514	05-30-18	TLM

MATERIALS

HOUSING:

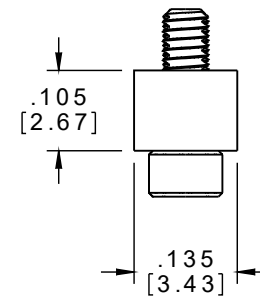
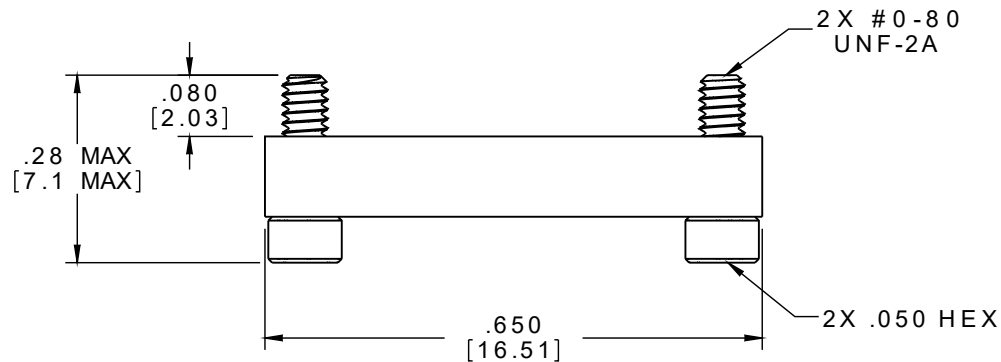
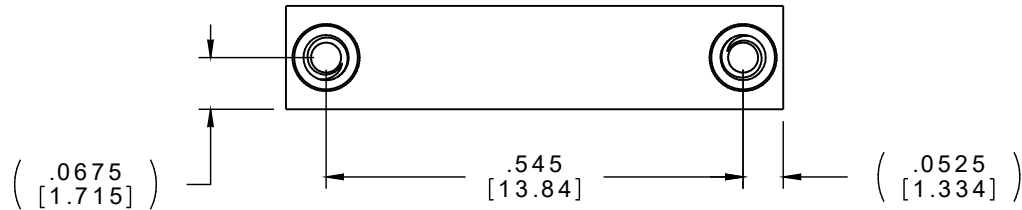
ALUMINUM 6061, NICKEL
PLATED (500 MICROINCHES
MINIMUM) PER SAE-AMS-2404.



ACTUAL SIZE

HARDWARE:

303 STAINLESS STEEL PER
ASTM A582



NOTE:

DIMENSIONS IN [] ARE IN
MILLIMETERS UNLESS
OTHERWISE NOTED AND ARE
FOR REFERENCE ONLY

DIMENSIONS	THIRD ANGLE
	-TOLERANCES-
	UNLESS OTHERWISE NOTED
	DIMENSIONS IN INCHES
	2 PL DEC ± .01
	3 PL DEC ± .005
	4 PL DEC ± .0005
	ANGLES ± 1°

THIS DRAWING CONTAINS CONFIDENTIAL AND PROPRIETARY INFORMATION WHICH IS THE PROPERTY OF OMNETICS CONNECTOR CORP. THIS DOCUMENT MAY NOT, IN WHOLE OR IN PART, BE DUPLICATED, OR DISCLOSED FOR ANY PURPOSE, WITHOUT WRITTEN PERMISSION FROM OMNETICS CONNECTOR CORP.	
DFTM. DGJ	DATE 11-01-12
CHK'D.	DATE
APP'D.	DATE
TITLE: DUST COVER FEMALE Bi-Lobe® (31) POSITION	

OMNETICS
CONNECTOR CORPORATION
7260 COMMERCE CIRCLE EAST
MINNEAPOLIS, MN 55432
WWW.OMNETICS.COM

CAGE CODE 61873	
DWG NO. A42031-031	
SHEET 1 OF 1	REV B
SCALE: 4:1	