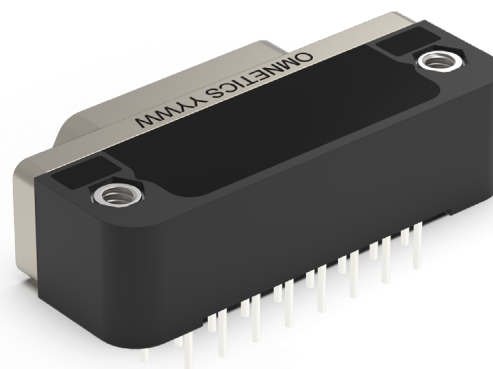
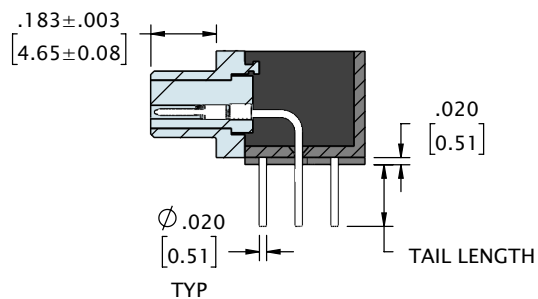
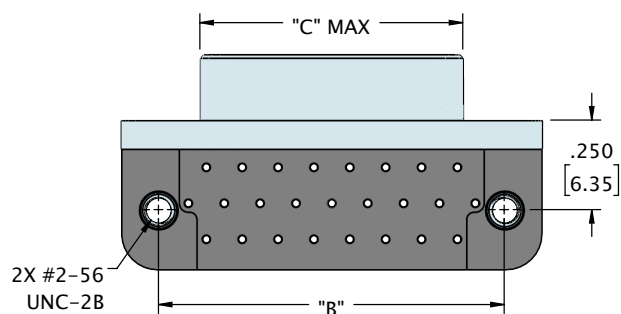
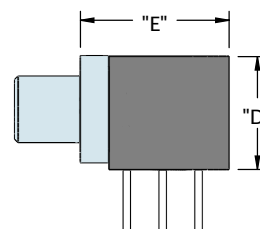
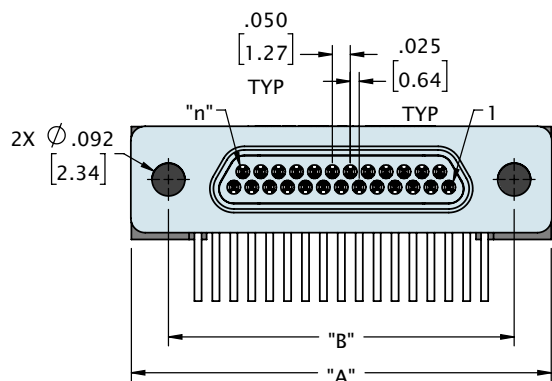


METAL SHELL MICRO-D NARROW RIGHT ANGLE .100 (TYPE SR1)



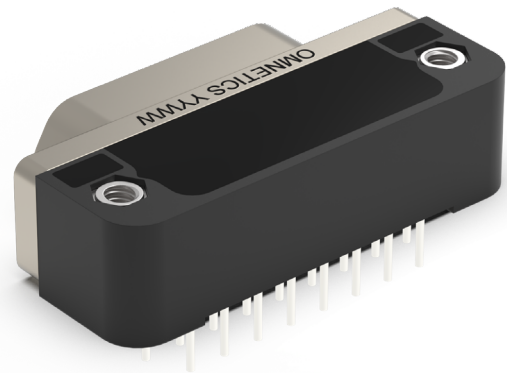
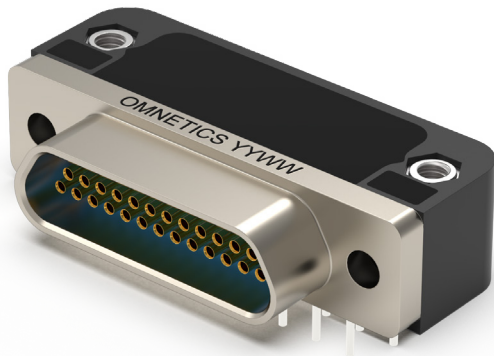
See page 160 for recommended board layout



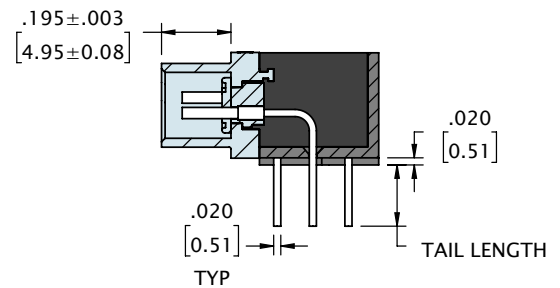
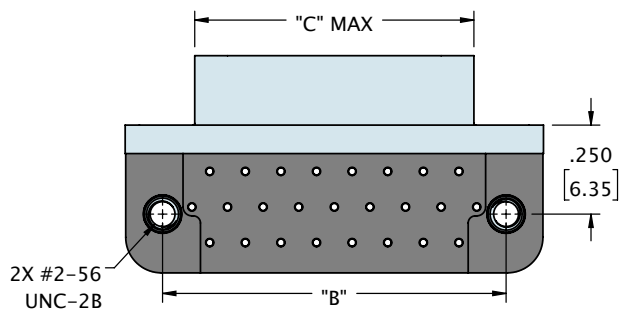
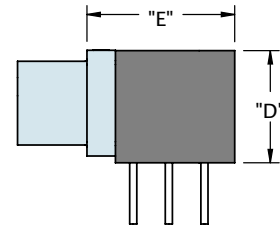
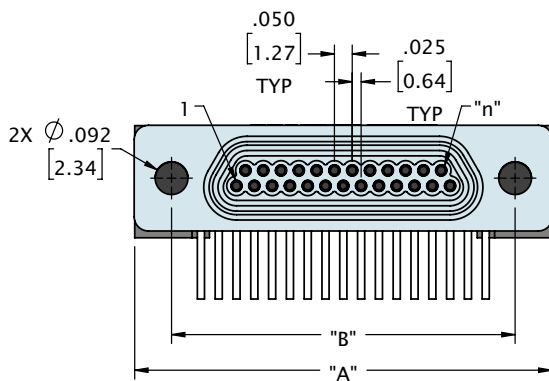
CONTACTS	ROWS	"A"	"B"	"C"	"D"	"E"
9	2	.775 [19.69]	.565 [14.35]	.334 [8.48]	.315 [8.00]	.415 [10.54]
15	2	.925 [23.50]	.715 [18.16]	.484 [12.29]	.315 [8.00]	.415 [10.54]
21	2	1.075 [27.31]	.865 [21.97]	.634 [16.10]	.315 [8.00]	.415 [10.54]
25	2	1.175 [29.85]	.965 [24.51]	.734 [18.64]	.315 [8.00]	.415 [10.54]
31	2	1.325 [33.66]	1.115 [28.32]	.884 [22.45]	.315 [8.00]	.515 [13.08]
37	2	1.475 [37.47]	1.265 [32.13]	1.034 [26.26]	.315 [8.00]	.515 [13.08]
51	3	1.425 [36.20]	1.215 [30.86]	.984 [24.99]	.350 [8.89]	.650 [16.51]

DIMENSIONS IN [] ARE IN MILLIMETERS AND ARE FOR REFERENCE ONLY

METAL SHELL MICRO-D NARROW RIGHT ANGLE .100 (TYPE SR1)



See page 160 for recommended board layout



CONTACTS	ROWS	"A"	"B"	"C"	"D"	"E"
9	2	.775 [19.69]	.565 [14.35]	.400 [10.16]	.315 [8.00]	.415 [10.54]
15	2	.925 [23.50]	.715 [18.16]	.550 [13.97]	.315 [8.00]	.415 [10.54]
21	2	1.075 [27.31]	.865 [21.97]	.700 [17.78]	.315 [8.00]	.415 [10.54]
25	2	1.175 [29.85]	.965 [24.51]	.800 [20.32]	.315 [8.00]	.415 [10.54]
31	2	1.325 [33.66]	1.115 [28.32]	.950 [24.13]	.315 [8.00]	.515 [13.08]
37	2	1.475 [37.47]	1.265 [32.13]	1.100 [27.94]	.315 [8.00]	.515 [13.08]
51	3	1.425 [36.20]	1.215 [30.86]	1.100 [27.94]	.350 [8.89]	.650 [16.51]

DIMENSIONS IN [] ARE IN MILLIMETERS AND ARE FOR REFERENCE ONLY