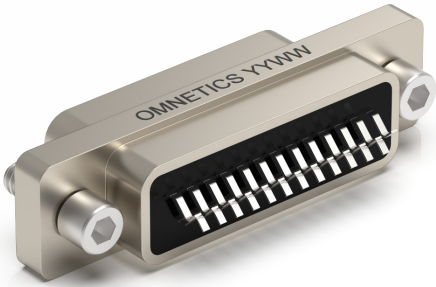
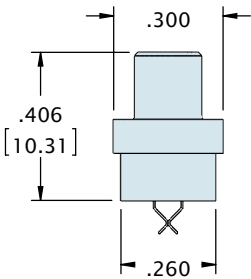
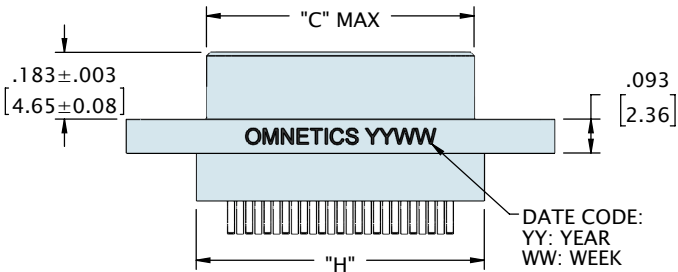
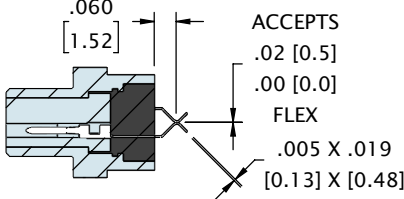
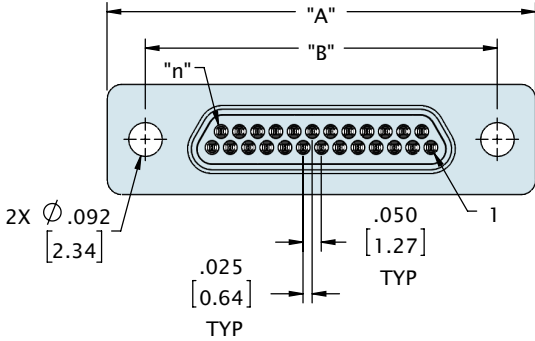


METAL SHELL MICRO-D FLEX TAIL (TYPE FF)



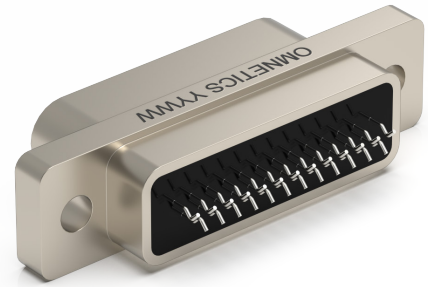
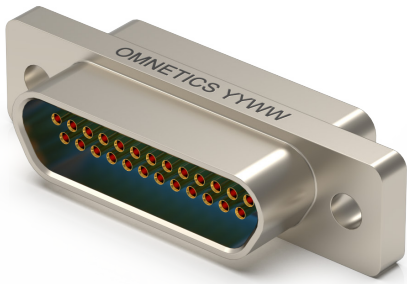
See page 157 for recommended board layout



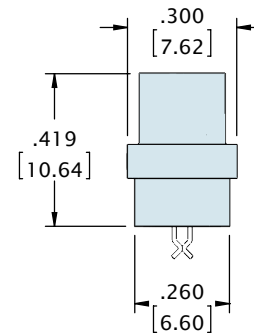
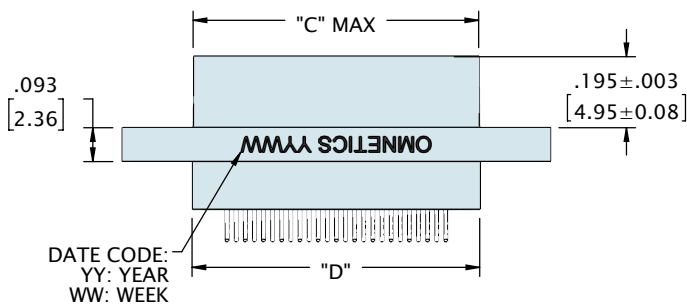
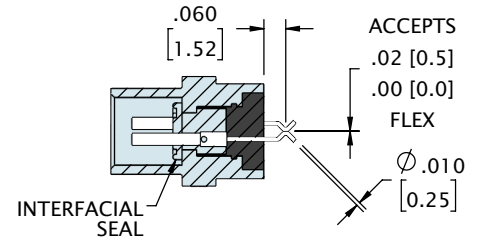
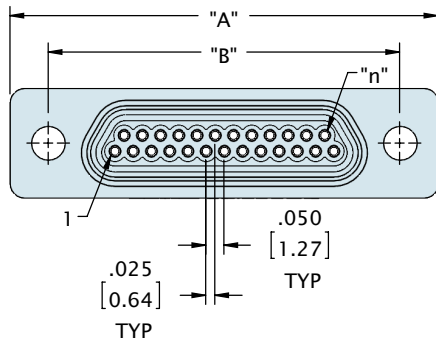
CONTACTS	ROWS	"A"	"B"	"C"	"D"
9	2	.775 [19.69]	.565 [14.35]	.334 [8.48]	.390 [9.91]
15	2	.925 [23.50]	.715 [18.16]	.484 [12.29]	.540 [13.72]
21	2	1.075 [27.31]	.865 [21.97]	.634 [16.10]	.690 [17.53]
25	2	1.175 [29.85]	.965 [24.51]	.734 [18.64]	.790 [20.07]
31	2	1.325 [33.66]	1.115 [28.32]	.884 [22.45]	.940 [23.88]
37	2	1.475 [37.47]	1.265 [32.13]	1.034 [26.26]	1.090 [27.69]
51	2	1.825 [46.36]	1.615 [41.02]	1.384 [35.15]	1.440 [36.58]

DIMENSIONS IN [] ARE IN MILLIMETERS AND ARE FOR REFERENCE ONLY

METAL SHELL MICRO-D FLEX TAIL (TYPE FF)



See page 157 for recommended board layout



CONTACTS	ROWS	"A"	"B"	"C"	"D"
9	2	.775 [19.69]	.565 [14.35]	.334 [8.48]	.390 [9.91]
15	2	.925 [23.50]	.715 [18.16]	.484 [12.29]	.540 [13.72]
21	2	1.075 [27.31]	.865 [21.97]	.634 [16.10]	.690 [17.53]
25	2	1.175 [29.85]	.965 [24.51]	.734 [18.64]	.790 [20.07]
31	2	1.325 [33.66]	1.115 [28.32]	.884 [22.45]	.940 [23.88]
37	2	1.475 [37.47]	1.265 [32.13]	1.034 [26.26]	1.090 [27.69]
51	2	1.825 [46.36]	1.615 [41.02]	1.384 [35.15]	1.440 [36.58]

DIMENSIONS IN [] ARE IN MILLIMETERS AND ARE FOR REFERENCE ONLY