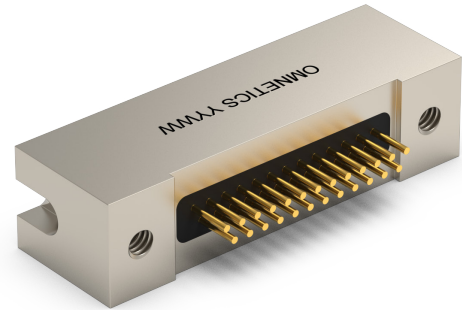
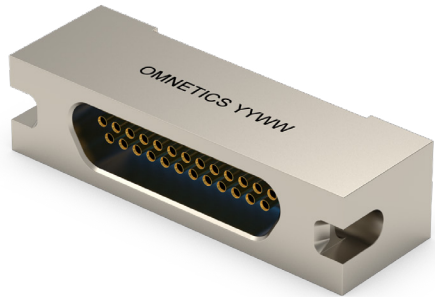
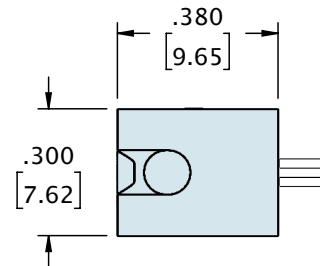
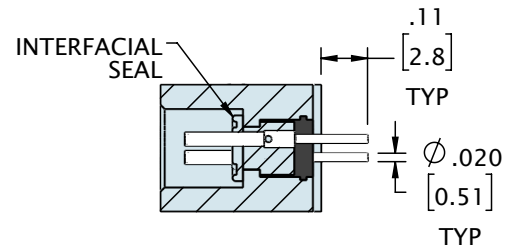
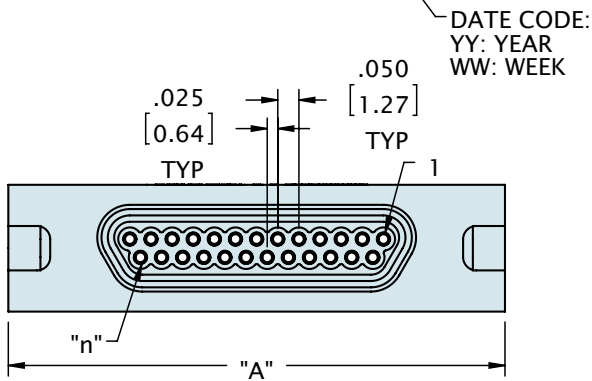
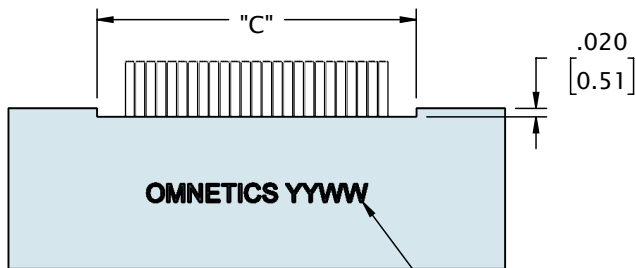
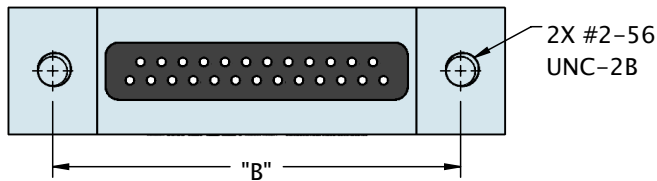


# LATCHING MICRO-D STRAIGHT THRU-HOLE (TYPE DD)



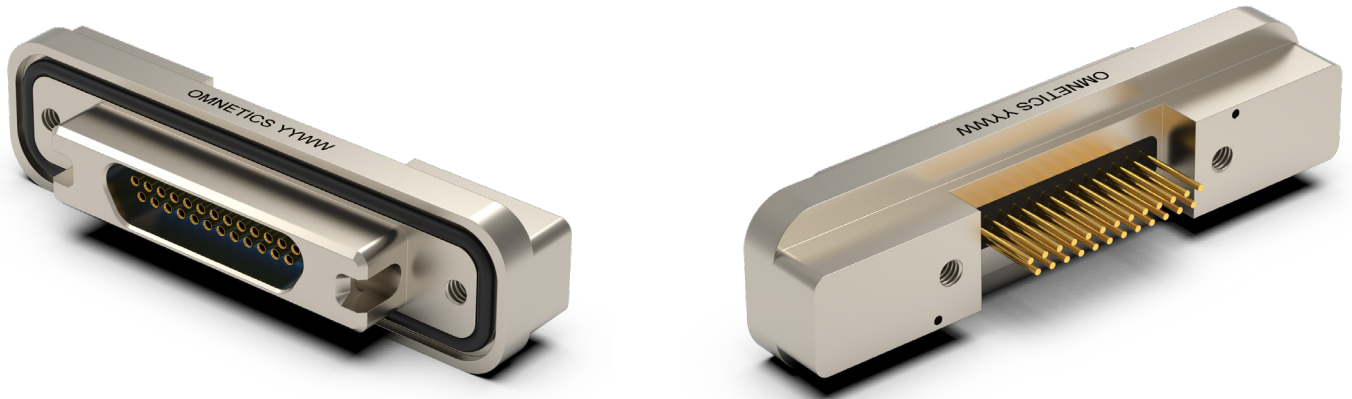
See page 158 for recommended board layout



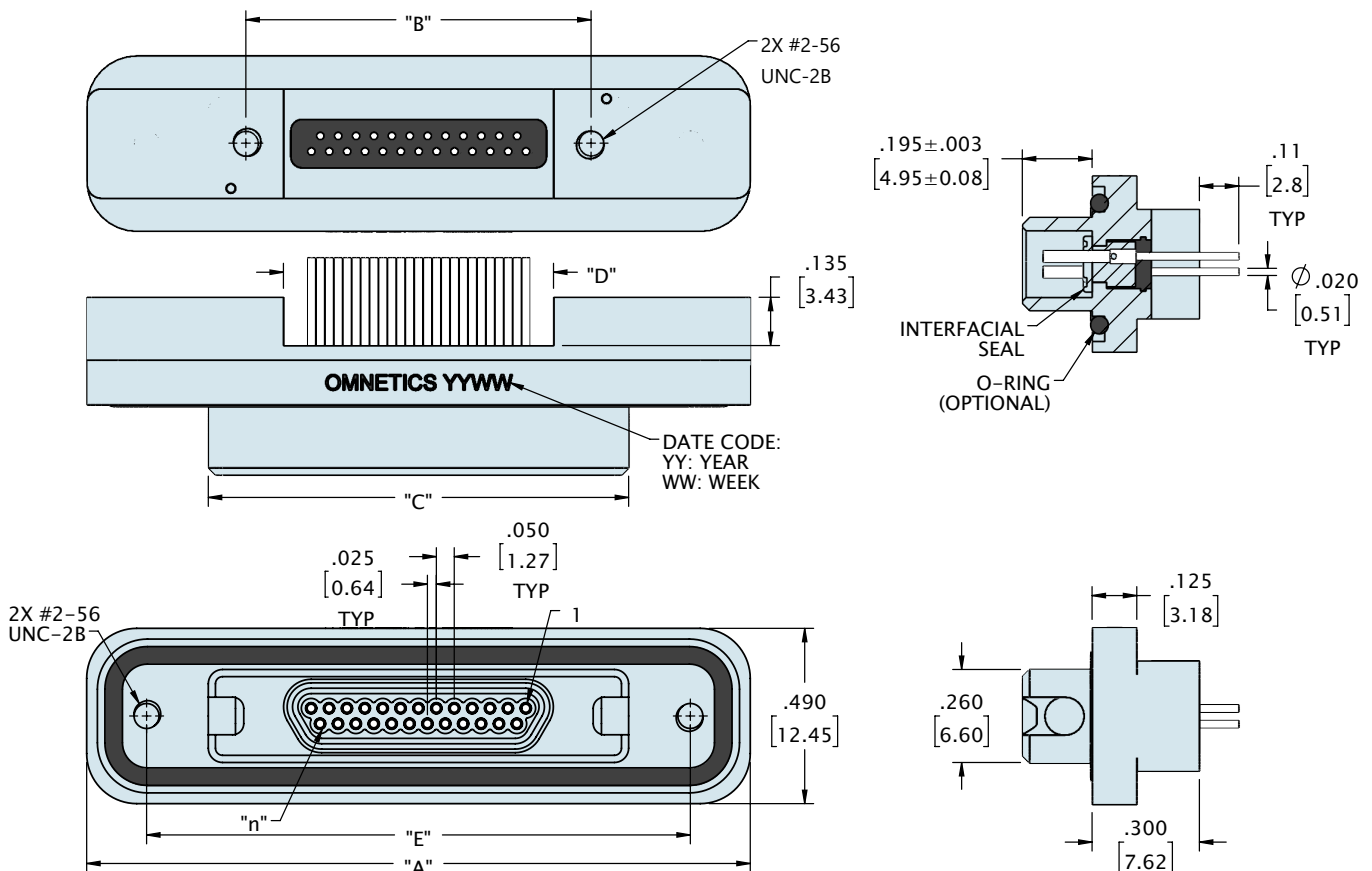
CONTACTS	ROWS	"A"	"B"	"C"
9	2	.775 [19.69]	.565 [14.35]	.355 [9.02]
15	2	.925 [23.50]	.715 [18.16]	.505 [12.83]
21	2	1.075 [27.31]	.865 [21.97]	.655 [16.64]
25	2	1.175 [29.85]	.965 [24.51]	.755 [19.18]
31	2	1.325 [33.66]	1.115 [28.32]	.905 [22.99]
37	2	1.475 [37.47]	1.265 [32.13]	1.055 [26.80]
51	2	1.825 [46.36]	1.615 [41.02]	1.405 [35.69]

DIMENSIONS IN [ ] ARE IN MILLIMETERS AND ARE FOR REFERENCE ONLY

# LATCHING MICRO-D STRAIGHT THRU-HOLE (TYPE DD)



See page 158 for recommended board layout



CONTACTS	ROWS	"A"	"B"	"C"	"D"	"E"
9	2	1.455 [36.96]	.565 [14.35]	.775 [19.69]	.355 [9.02]	1.120 [28.45]
15	2	1.605 [40.77]	.715 [18.16]	.925 [23.50]	.505 [12.83]	1.270 [32.26]
21	2	1.755 [44.58]	.865 [21.97]	1.075 [27.31]	.655 [16.64]	1.420 [36.07]
25	2	1.855 [47.12]	.965 [24.51]	1.175 [29.85]	.755 [19.18]	1.520 [38.61]
31	2	2.005 [50.93]	1.115 [28.32]	1.325 [33.66]	.905 [22.99]	1.670 [42.42]
37	2	2.155 [54.74]	1.265 [32.13]	1.475 [37.47]	1.055 [26.80]	1.820 [46.23]
51	2	2.505 [63.63]	1.615 [41.02]	1.825 [46.36]	1.405 [35.69]	2.170 [55.12]

DIMENSIONS IN [ ] ARE IN MILLIMETERS AND ARE FOR REFERENCE ONLY