

# MATERIALS & SPECIFICATIONS

PART NO.	A 79105-001	REV	ECO	DATE	APP
		D	98556	05-18-12	TLM

**INSULATOR MATERIAL:**  
THERMOPLASTIC POLYMER PER MIL-DTL-32139

**CONTACT MATERIAL:**  
COPPER ALLOY PER MIL-DTL-32139. GOLD PLATED PER ASTM B488,  
(HARD GOLD) TYPE II CODE C CLASS 1.27

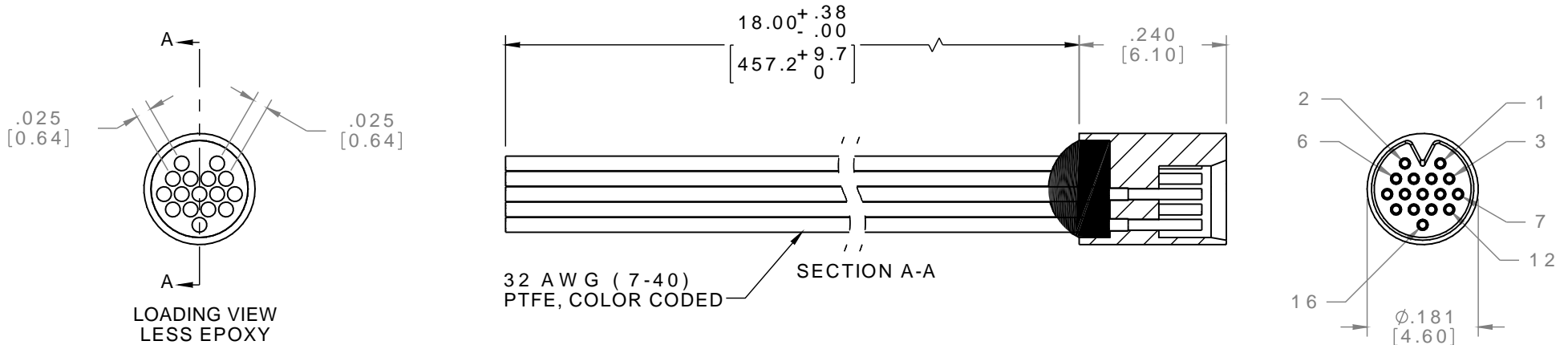
**TERMINATION:**  
32 AWG (7-40) TYPE ET, PER NEMA HP3, COLOR CODED PER TABLE

**CURRENT CAPACITY:**  
1 AMP MAX PER MIL-DTL-32139

**CONTACT RESISTANCE:**  
71 MILLIOHMS (71 mV) MAX @ 1.0 AMPS PER MIL-DTL-32139



ACTUAL SIZE  
EXCLUDING WIRE LENGTH



SOCKET #	COLOR
1, 11	BLACK
2, 12	BROWN
3, 13	RED
4, 14	ORANGE
5, 15	YELLOW
6, 16	GREEN
7	BLUE
8	VIOLET
9	GRAY
10	WHITE

INTERNAL USE ONLY

USE MFG. LOADING  
PROCEDURE NC-16S

**RoHS**

NCS SLDW	THIRD ANGLE	THIS DRAWING CONTAINS CONFIDENTIAL AND PROPRIETARY INFORMATION WHICH IS THE PROPERTY OF OMNETICS CONNECTOR CORPORATION. THIS DOCUMENT MAY NOT, IN WHOLE OR IN PART, BE DUPLICATED, OR DISCLOSED FOR ANY PURPOSE, WITHOUT WRITTEN PERMISSION FROM OMNETICS CONNECTOR CORP.		 CONNECTOR CORPORATION 7260 COMMERCE CIRCLE EAST MINNEAPOLIS, MN 55432 WWW.OMNETICS.COM	CAGE CODE 61873		
	-TOLERANCES- UNLESS OTHERWISE NOTED DIMENSIONS IN INCHES	DFTM. TLM	DATE 01-14-09		TITLE: (16) SOCKET FEMALE NANO CIRCULAR CONNECTOR	DWG NO. A79105-001	
	2 PL DEC ± .01 3 PL DEC ± .005 4 PL DEC ± .0005 ANGLES ± 1°	CHK'D.	DATE			SHEET 1 OF 1	
		APP'D.	DATE			REV D	SCALE: 4:1