

**MATERIALS & SPECIFICATIONS**

HOUSING: ALUMINUM 6061-T6, NICKEL PLATE  
PER AMS-C-26074

INSULATOR: LIQUID CRYSTAL POLYMER (LCP)  
PER ASTM D5138

CONTACT: COPPER ALLOY PER MIL-DTL-83513,  
GOLD PLATED PER ASTM B488,  
(HARD GOLD) TYPE II CODE C  
CLASS 1.27

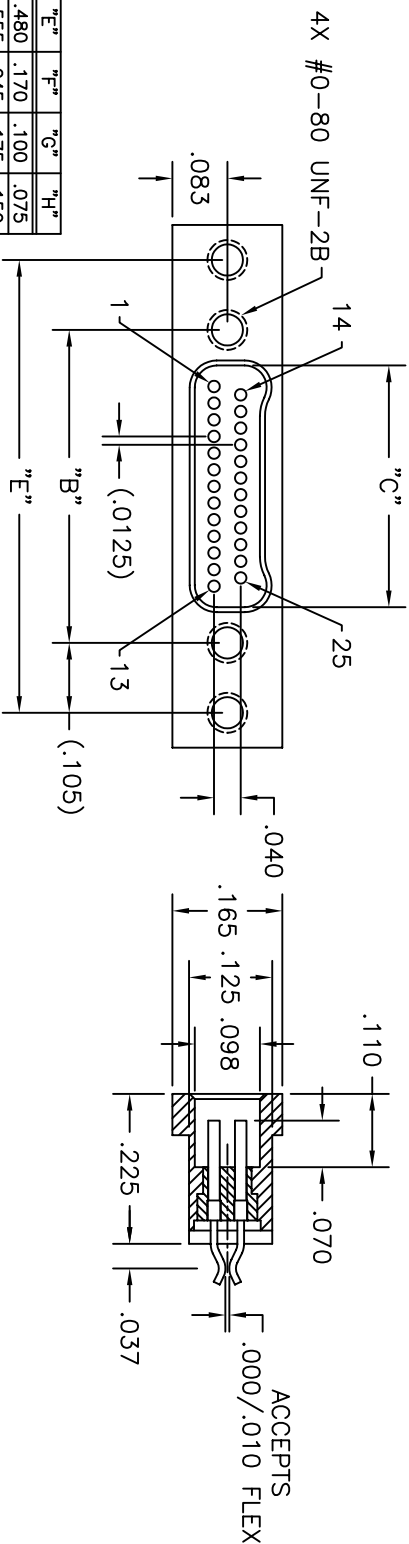
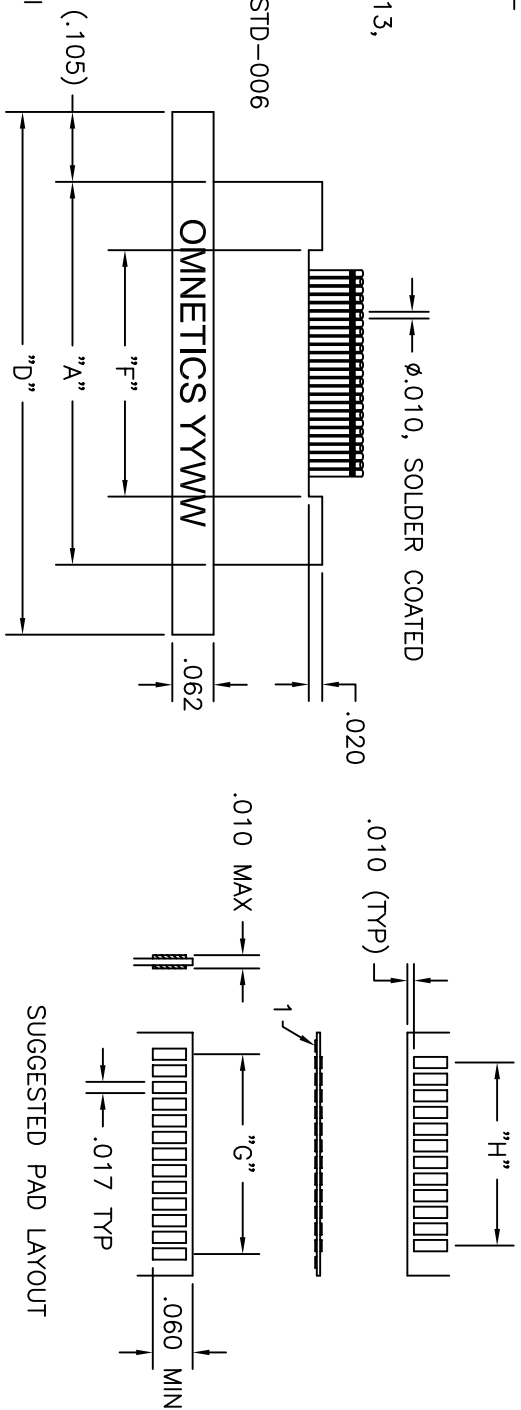
TERMINATIONS: COATED WITH SN63A PER J-STD-006

CURRENT RATING 1 AMP MAX

CONTACT RESISTANCE 25 MILLIOHM MAX

PERFORMANCE: PRODUCT FAMILY TESTED TO  
AND PASSED THE  
PERFORMANCE  
SPECIFICATIONS OF TABLE VIII  
OF MIL-DTL-32139

PART NO.	REV	ECO	DATE	APP
	D	94450	05-14-07	TLM



PART NO.	CONTACTS	"A"	"B"	"C"	"D"	"E"	"F"	"G"	"H"
A29800-009	9	.375	.270	.163	.585	.480	.170	.100	.075
A29800-015	15	.450	.345	.238	.660	.555	.245	.175	.150
A29800-021	21	.525	.420	.313	.735	.630	.320	.250	.225
A29800-025	25	.575	.470	.363	.785	.680	.370	.300	.275
A29800-031	31	.650	.545	.438	.860	.755	.445	.375	.350
A29800-037	37	.725	.620	.513	.935	.830	.520	.450	.425
A29800-051	51	.900	.795	.688	1.110	1.005	.695	.625	.600
A29800-065	65	1.075	.970	.863	1.285	1.180	.870	.800	.775

—TOLERANCES—  
UNLESS OTHERWISE NOTED  
DIMENSIONS IN INCHES

2 PL DEC	$\pm .01$	DFTM. PER	DATE	04-18-03
3 PL DEC	$\pm .005$	CHK'D.	DATE	
4 PL DEC	$\pm$	APP'D.	DATE	
ANGLES	$\pm$			

**OMNETICS CONNECTOR CORPORATION**

TITLE:  
(XX) SOCKET FEMALE  
BI-LOBE CONNECTOR

CAGE CODE **61873**  
DWG NO. **A29800-0XX**

SHEET 1 OF 1  
SCALE: 5:1

REV D