

MATERIALS & SPECIFICATIONS

HOUSING: ALUMINUM 6061-T6, NICKEL PLATE
PER AMS-C-26074

INSULATOR: LIQUID CRYSTAL POLYMER (LCP)
PER ASTM D5138

CONTACT: COPPER ALLOY PER MIL-DTL-83513,
GOLD PLATED PER ASTM B488,
(HARD GOLD) TYPE II CODE C
CLASS 1.27

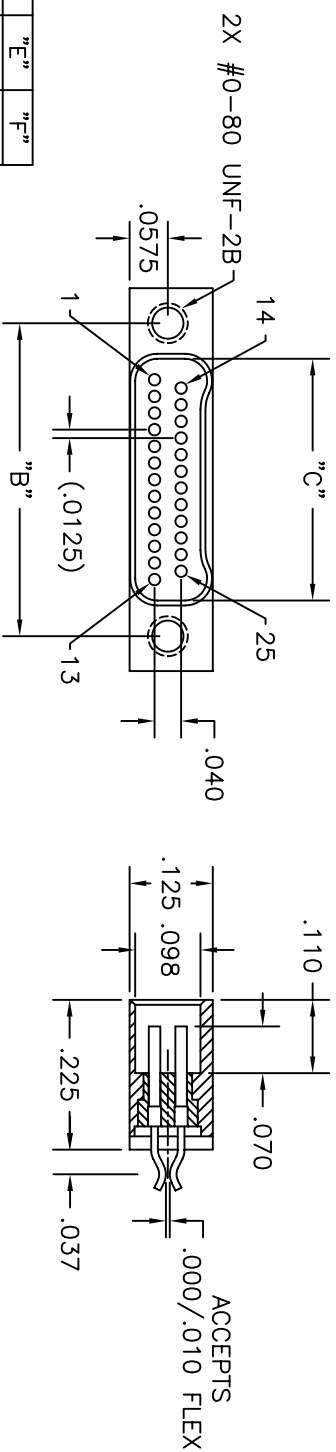
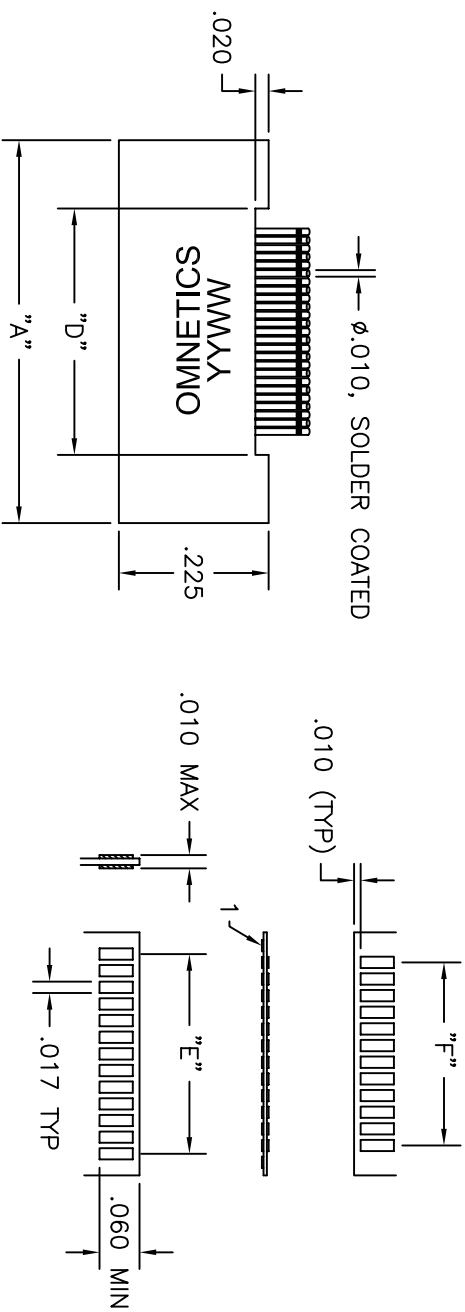
TERMINATIONS: COATED WITH SN63A PER J-STD-006

CURRENT RATING 1 AMP MAX

CONTACT RESISTANCE 25 MILLIOHM MAX

PERFORMANCE: PRODUCT FAMILY TESTED TO
AND PASSED THE PERFORMANCE
SPECIFICATIONS OF TABLE VIII
OF MIL-DTL-32139

PART NO.	CONTACTS	"A"	"B"	"C"	"D"	"E"	"F"
A29300-009	9	.375	.270	.163	.170	.100	.075
A29300-015	15	.450	.345	.238	.245	.175	.150
A29300-021	21	.525	.420	.313	.320	.250	.225
A29300-025	25	.575	.470	.363	.370	.300	.275
A29300-031	31	.650	.545	.438	.445	.375	.350
A29300-037	37	.725	.620	.513	.520	.450	.425
A29300-051	51	.900	.795	.688	.695	.625	.600
A29300-065	65	1.075	.970	.863	.870	.800	.775



(SHOWN)

-TOLERANCES-		OMNETICS CONNECTOR CORPORATION		TITLE:		CAGE CODE 61873	
UNLESS OTHERWISE NOTED		DATE		DATE		DWG NO.	
DIMENSIONS IN INCHES		04-17-03		A29300-0XX		SCALE: 5:1	
2 PL DEC	± .01	DFTM. PER	DATE	(XX) SOCKET FEMALE	SHEET 1 OF 1	REV	
3 PL DEC	± .005	CHK'D.	DATE	BI-LOBE CONNECTOR	1	E	
4 PL DEC	±	APP'D.	DATE				
ANGLES	±						
MNSO							

PART NO.	REV	ECO	DATE	APP
	E	94450	05-14-07	TLM